



Unveiling Research Data Stocks: A Case of Humboldt-Universität zu Berlin

iConference 2014

Breaking Down Walls | Culture, Context, Computing

Berlin, 5th March 2014

Elena Simukovic & Maxi Kindling

Research Data Management at HU Berlin



Agenda

- RDM at HU
- Context
- Survey on RDM
- Support & Service Needs
- Outlook: Comparing results with other HEIs
- Lessons learned



Research Data Management at HU Berlin



RDM at HU Berlin

- 'RDM coordinator' since 2012 (joint initiative of university library, research support office and IT services)
- Current state at HU Berlin?
- 'Best Practice' research in a student-run project at BSLIS
- Current activities and next steps
 - Further advocacy efforts for RDM support
 - Institutional RDM policy and accompanying guidelines (to be passed by the Academic Senate)
 - Roadmap for RDM services based on gap analysis



Recommendation 7: Safeguarding and Storing of Primary Data

Primary data as the basis for publications shall be securely stored for ten years in a durable form in the institution of their origin.

http://www.dfg.de/download/pdf/dfg_im_profil/reden_stellungnahmen/download/empfehlung_wiss_praxis_1310.pdf



Context

(Political) Context

- 'Good scientific practice' (DFG 1998, 2013)
- Priority Initiative “Digital Information”
- German Initiative of Network Information
- Open Access Declaration HU Berlin (2006)
- 'Good scientific practice' HU (2002)
- Open Research Data Pilot Horizon 2020

Issues

- Most German HEIs do not yet actively support RDM
- Data Archiving and Data Sharing
- Discussion on ‘Academic freedom’
- Legal Aspects
- Financial and Organizational Aspects
- Responsibility

Research Data Management at HU Berlin



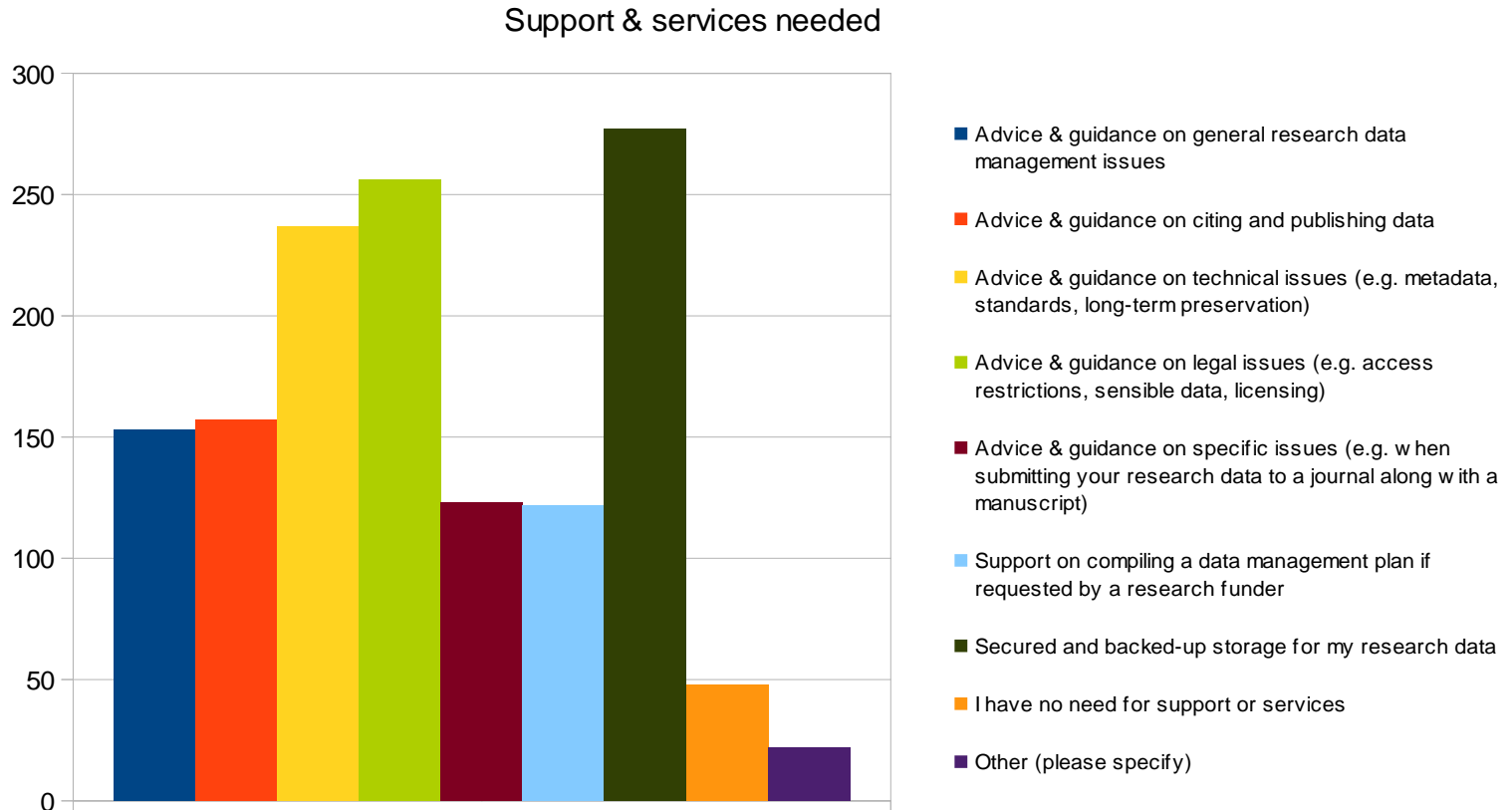
Survey on RDM

- Survey design based on RDM surveys at the University of Glasgow, Imperial College London, University of Cambridge, ETH Zürich and in PARSE.Insight project
- Response rate of 24% of academic staff (499 participants) during 6 weeks in January-March 2013
- Some results
 - Heterogeneous types of research data among departments
 - Active professors vs passive younger researchers
 - Problematic notion of 'data' in arts & humanities
 - 'Good scientific practice' difficult by some means
 - Strong demand for advice & guidance in legal issues
 - Gathering deep understanding through follow-up interviews

Research Data Management at HU Berlin



Support & Service Needs



Support & services needed; Humboldt-Universität zu Berlin

Research Data Management Survey Results. DOI:

10.5281/zenodo.7448



Research Data Management at HU Berlin



Outlook: Comparing results with other HEIs

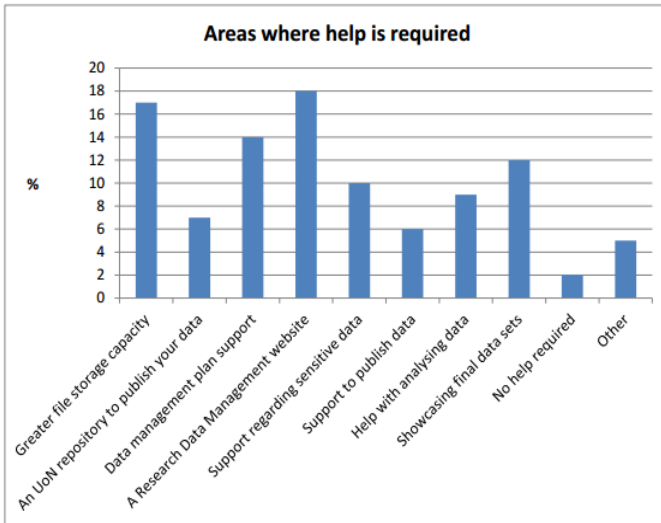


Figure 28: Areas where help is required (University of Nottingham, ADMIRE project)

- Similar basic needs
- Different role of DMP

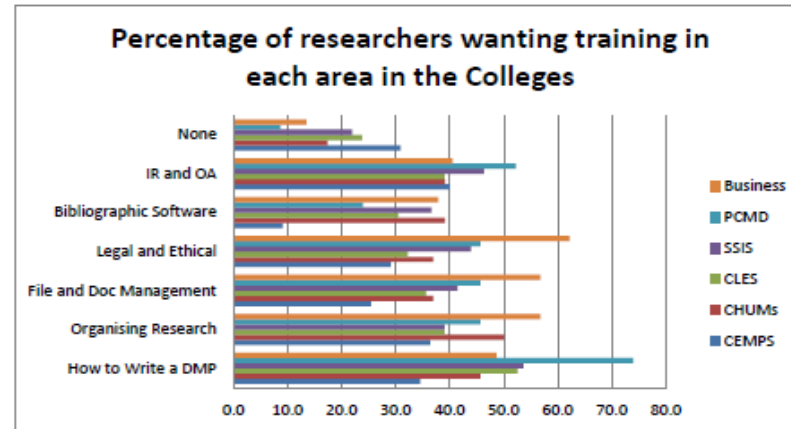


Chart 3.11.1: Percentage of researchers wanting training in each area

Training topics (University of Exeter, Open Exeter project)

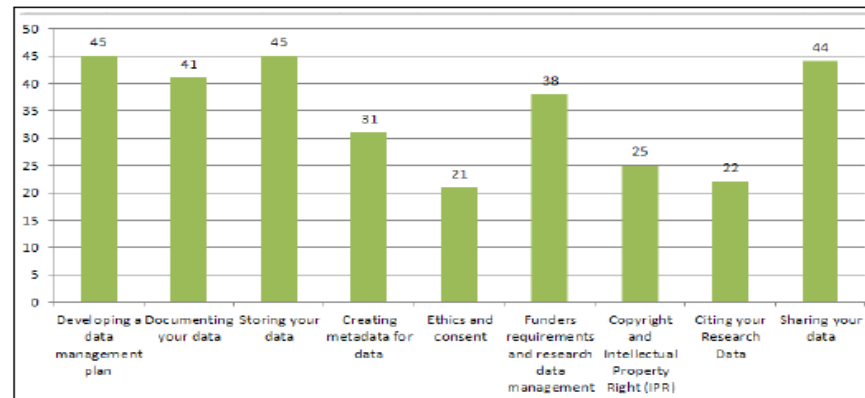


Figure 20: No. of respondents with a strong interest in the training course (Research Data Management at LSHTM)



Research Data Management at HU Berlin



Lessons learned

- Constant advocacy efforts are needed at all institutional levels: from PhD students to administration offices
- Driving the cultural shift seems to be more difficult than building a new technical infrastructure
- Balancing always and everywhere: local setting vs global research collaborations, generic service vs discipline-specific needs
- Researchers are happy if you can make their life easier
- Need to build a national competence network by taking an example of DCC and to support German HEIs and research institutions in facing 'the RDM challenge'
- Learning by doing ...

Research Data Management at HU Berlin



... „practice what you preach!“

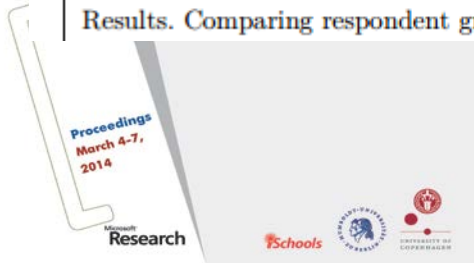


Home / Open Access & Open Science Research / Humboldt-Universität zu Berlin Research Data Management Survey Results

Citation: Simukovic, E., Kindling, M., & Schirmbacher, P. (2014). Unveiling Research Data Stocks: A Case of Humboldt-Universität zu Berlin. In *iConference 2014 Proceedings* (p. 742–748). doi:10.9776/14351

Copyright: Copyright is held by the authors.

Research Data: Simukovic, Elena et al (2013). Humboldt-Universität zu Berlin Research Data Management Survey Results. doi:10.5281/zenodo.7448 & Simukovic, Elena et al (2013). Humboldt-Universität zu Berlin Research Data Management Survey Results. Comparing respondent groups “Professor” and “Research associate”. doi:10.5281/zenodo.7449



Files ▾

Name	Date	Size	
Survey_RDM_2013_HU-Berlin.ods	21 Oct 2013	264.5 kB	Download

Comments ▾

Related content ▾

10.5281/zenodo.7449

Collections:
[Communities > Open Access & Open Science Research Datasets](#)
[Open Access](#)

License (for files):
[Creative Commons Attribution](#)

Uploaded by:
[elena.simukovic](#) (on 21 October 2013)

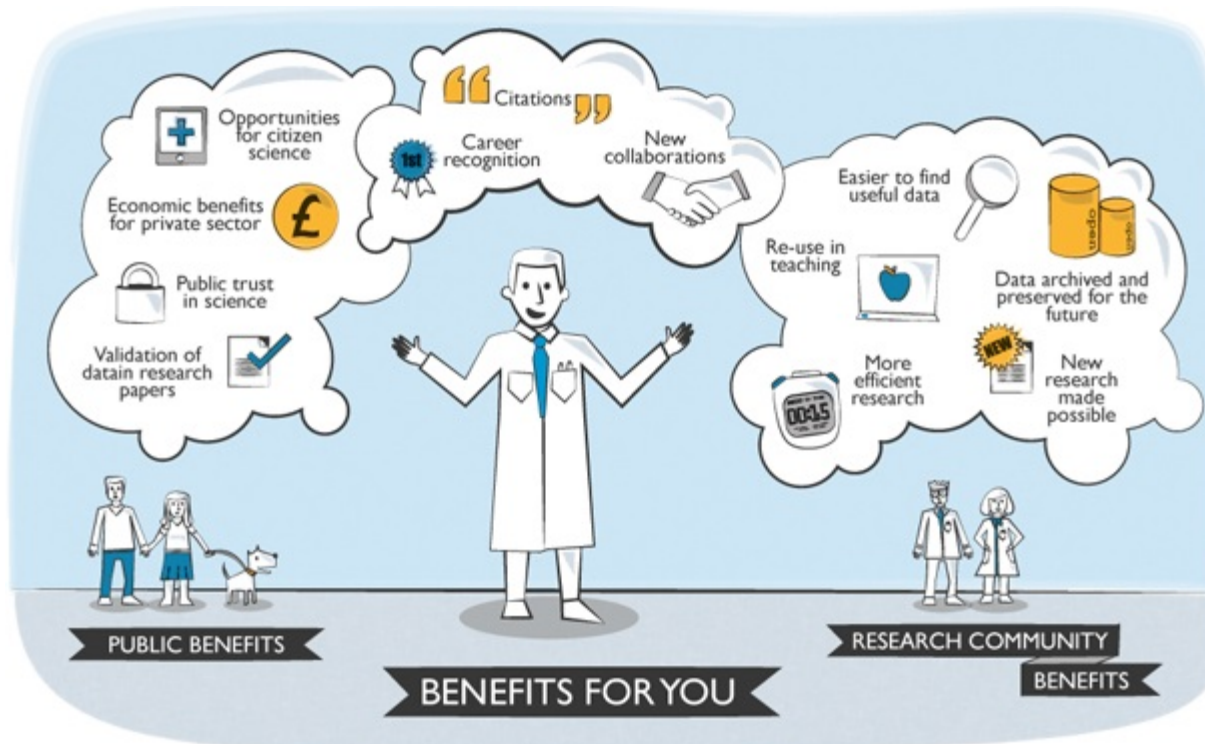


04.03.2014

Research Data Management at HU Berlin



Thank you for your attention!



Elena Simukovic

RDM coordinator

Computer- and Media Service

[elena.simukovic@cms.hu-](mailto:elena.simukovic@cms.hu-berlin.de)

[berlin.de](mailto:elena.simukovic@cms.hu-berlin.de)

<http://openarchaeologydata.metajnl.com/about/>

Maxi Kindling

Researcher and PhD candidate

Berlin School of Library and Information Science

maxi.kindling@ibi.hu-berlin.de



04.03.2014

Elena Simukovic & Maxi Kindling
Humboldt-Universität zu Berlin



References

- Survey report and spreadsheets:
 - Simukovic, Elena; Kindling, Maxi; Schirmbacher, Peter (2013). Forschungsdaten an der Humboldt- Universität zu Berlin. Bericht über die Ergebnisse der Umfrage zum Umgang mit digitalen Forschungsdaten an der Humboldt-Universität zu Berlin. URN: urn:nbn:de:kobv:11-100213001
 - Humboldt-Universität zu Berlin Research Data Management Survey Results. Available from Zenodo. DOI: 10.5281/zenodo.7448
 - Humboldt-Universität zu Berlin Research Data Management Survey Results. Comparing respondent groups "Professor" and "Research associate". Available from Zenodo. DOI: 10.5281/zenodo.7449
- Achard, Pablo; Ayrís, Paul; Fdida, Sergio; Gradmann, Stefan; Horstmann, Wolfram; Labastida, Ignasi; Lyon, Liz; Maes, Katrien; Reilly, Susan; Smit, Anja (2013). LERU Roadmap for Research Data. League of European Research Universities (LERU). Advice Paper No.14 – December 2013.
http://www.leru.org/files/publications/AP14_LERU_Roadmap_for_Research_data_final.pdf
- Deutsche Forschungsgemeinschaft. (1998, 2013). Safeguarding Good Scientific Practice. Memorandum. ISBN 978-3-527-33703-3. Retrieved from http://www.dfg.de/foerderung/grundlagen_rahmenbedingungen/gwp/

Research Data Management at HU Berlin



References (continued)

- European Commission (2013). Guidelines on Open Access to Scientific Publications and Research Data in H2020. Version 16 December 2013. Available online: http://ec.europa.eu/research/participants/data/ref/h2020/grants_manual/hi/oa_pilot/h2020-hi-oa-pilot-guide_en.pdf
- European Commission (2013). Guidelines on Data Management in Horizon 2020. Version 16 December 2013. Available online: http://ec.europa.eu/research/participants/data/ref/h2020/grants_manual/hi/oa_pilot/h2020-hi-oa-data-mgt_en.pdf
- Alyssa Goodman, Alberto Pepe, Alexander W. Blocker, Christine L. Borgman, Kyle Cranmer, Merce Crosas, Rosanne Di Stefano, Yolanda Gil, Paul Groth, Margaret Hedstrom, David W. Hogg, Vinay Kashyap, Ashish Mahabal, Aneta Siemiginowska, Aleksandra Slavkovic (2014). 10 Simple Rules for the Care and Feeding of Scientific Data. Retrieved from: <http://arxiv.org/pdf/1401.2134v1.pdf>



Research Data Management at HU Berlin



References (continued)

- Knight, Gareth (2013). Research Data Management at LSHTM: Web Survey Report. London School of Hygiene and Tropical Medicine. Retrieved from: <http://blogs.lshtm.ac.uk/rdmss/files/2013/04/LSHTM-RDM-Web-Survey-Report.pdf>
- Open Exeter Project Team (2012). Summary Findings of the Open Exeter Data Asset Framework (DAF) Survey. University of Exeter. Retrieved from: <http://hdl.handle.net/10036/3689>
- Parsons, Thomas; Grimshaw, Shirley; Williamson, Laurian (2013). Research Data Management Survey. The University of Nottingham. Retrieved from: <http://admire.jiscinvolve.org/wp/files/2013/02/ADMIRE-Survey-Results-and-Analysis-2013.pdf>

